

EES3



Powerful
Processor
Large
Memory



SIM Access
Profile



Quad-Band



Tunneling
Mode



EDGE / GPRS
Class 12



Industrial
Interface



USB



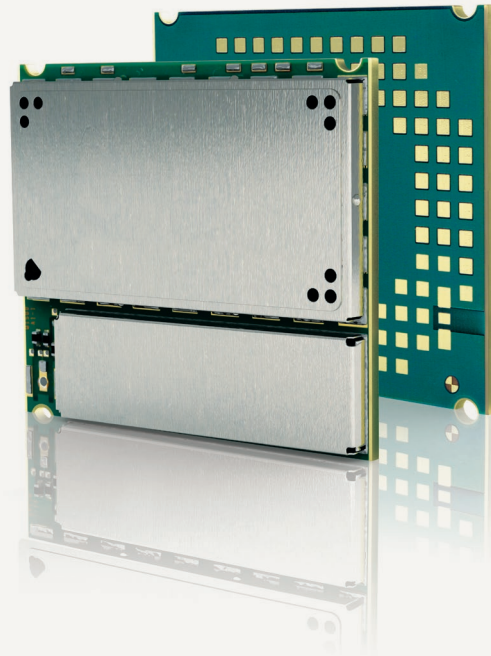
RIL Driver



TCP/IP



RLS Monitor
(Jamming
Detection)



OTHER FAMILIES

Cinterion® EES3

Full Featured, Truly Industrial and Scalable Platform
with Leading Edge LGA Technology

Cinterion® EES3

Full Featured, Truly Industrial and Scalable Platform with Leading Edge LGA Technology

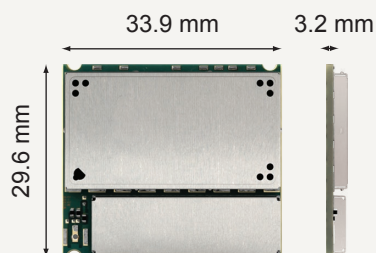
The Cinterion EES3 module offers scalability, compatibility and an easy path to future upgrades with added functionality as technology needs expand.

The module features efficient and reliable LGA surface mounting technology along with optimized size and performance.

Gemalto M2M brings its 15 years of industry-leading expertise to this product, which is based on a new advanced processor design and the Company's field-proven and reliable M2M software stack.

The latest chip technology enables high performance, improved efficiency and the benefit of long-term availability.

Full Featured, Truly Industrial and Scalable Platform with Leading Edge LGA Technology



EDGE Class 12 – The highest symmetric data speed (236 kbps in uplink and downlink) for M2M applications requiring quick data transmissions.

GPRS Class 12 – High symmetric data speed (86 kbps in uplink and downlink) for M2M applications.

RLS Monitoring – Remote Link Stability Monitoring providing network performance information which enables for example effective customized jamming detection.

Tunneling mode – A smart way that allows the microcontroller to control any device that has a serial interface like GPS receiver or NFC device through the module and enable transparent communication.

Advanced Temperature Management – Protects the module in critical thermal environments to maintain reliability and functionality, allowing a long product life time.

Location API – Easy connection for external GPS to provide coordinates, landmarks or landmark stores.

Gemalto M2M Support includes:

- > Personal design-in consulting for hardware and software
- > Extensive RF test capabilities
- > GCF/PTCRB conform pretests to validate approval readiness
- > Regular training workshops



Local engineers, a competent helpdesk, a dedicated team of R&D specialists and an advanced development center are the hallmarks of our leading support offer.

Cinterion® EES3 Features

GENERAL FEATURES

- > Control via AT commands (Hayes 3GPP TS 27.007 and 27.005)
- > Circuit Switched Data: Up to 14.4 kbps
- > SMS, PDU mode, cell broadcast
- > Fax: Group 3, class 1
- > SIM Application toolkit (release 99) letter class "b", "c" and "e"
- > TCP/IP stack access via AT commands and transparent TCP service
- > Internet services: TCP, UDP, HTTP, FTP, SMTP, POP3, Ping
- > Supply voltage range: 3.2 ... 4.5 V
- > Operational temperature range:
 - > -40 °C to +85 °C
 - > switch off: > +85 °C
- > Dimensions: 33.9 × 29.6 × 3.2 mm
- > Weight: 5.5 g

SPECIFICATION FOR EDGE DATA TRANSMISSION

- > GPRS Class 12 & Class 10
 - DL: max. 236.8 kbps, UL: max. 236.8 kbps
 - DL: max. 236.8 kbps, UL: max. 236.8 kbps
- > Modulation and coding schemes MCS 1-9

SPECIFICATION FOR GPRS DATA TRANSMISSION

- > EDGE Class 12
 - DL: max. 86 kbps, UL: max. 86 kbps
- > Coding schemes CS 1-4

SPECIFICATION FOR VOICE

- > Triple-rate codec for HR, FR, and EFR
- > Adaptive multi-rate AMR
- > Hands-free operation, Echo cancellation & Noise reduction

SPECIAL FEATURES (EXTRACT)

- > Secure data transmission with HTTPS, SSL and PKI
- > Serial interface modem for Microsoft® Windows 7™/XP™/Vista™
- > RLS Monitoring (Jamming Detection)
- > Advanced Temperature Management
- > Informal Network scan (easy scan)
- > Firmware update via serial and USB interface
- > TLS for IP over AT
- > Tunneling mode for external serial devices
- > Real time clock with alarm functionality

INTERFACES

- > Antenna 50 Ω solder pad
- > Audio: 2 × analog, 1 × digital
- > 2 × Serial interfaces (ITU-T V.24 protocol)
- > SIM card interface: 3 V, 1.8 V
- > USB 2.0 full speed
- > I²C & SPI bus

DRIVERS

- > RIL driver for Microsoft® Windows CE™ based devices
- > Multiplex Driver Microsoft® Windows and Linux

APPROVALS

- > Local approvals and network operator certifications (list available)
- > CE, R&TTE, GCF, UL, FCC, IC, PTCRB, RoHS

For more information, please visit

gemalto.com/m2m, www.facebook.com/gemalto, or Follow @gemaltom2m on twitter.

The information provided in this brochure contains merely general descriptions or characteristics of performance, which in case of actual use do not always apply as described or which may change as a result of further development of the products. An obligation to provide the respective characteristics shall only exist if expressly agreed in the terms of contract. All product designations may be trademarks or product names of Gemalto M2M GmbH or supplier companies whose use by third parties for their own purposes could violate the rights of the owners. Oracle and Java are registered trademarks of Oracle and/or its affiliates. Other names may be trademarks of their respective owners. ARM9 is a registered trademark of ARM Limited.

Gemalto M2M GmbH
St.-Martin-Str. 60
81541 Munich
Germany



➔ GEMALTO.COM/M2M

gemalto
security to be free