

## INTRODUCTION

# 1.25mm (.049") Pitch CLIK-Mate™ SMT WTB Connectors

*Molex's new 1.25mm pitch SMT CLIK-Mate series has a superior lock design that offers easier use and better mating retention compared to competitive versions. The system also provides about 60% space savings compared to similar dual-lock 2.00mm pitch versions.*

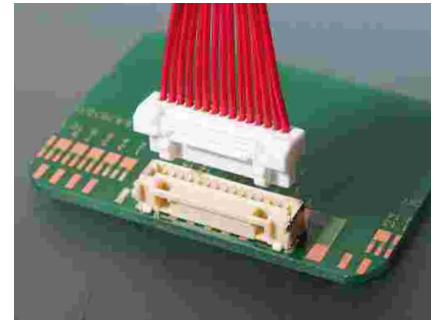
CLIK-Mate 1.25 was designed for applications such as LCD TVs that require higher pin count connectors to carry more signal lines in less space. The system has a similar design to Molex's CLIK-Mate 2.0 family and includes many of the same features such as a unique tuning-fork terminal concept that provides low insertion force and secure mating contact.

The system is available in both vertical and right angle versions in 2-15 circuits to meet various application needs.

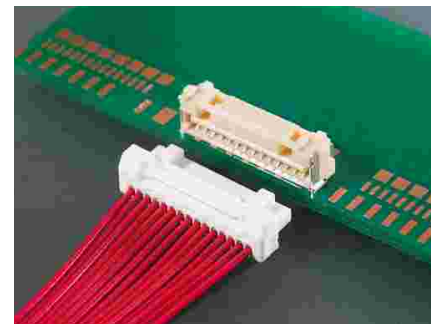
### Specifications:

- Current: 1.0A
- Voltage: 50V
- Contact Resistance: 20 milliohms max.
- Dielectric Withstanding Voltage: 500V AC
- Insulation Resistance: 100 Megohms minimum
- Operating Temperature: -25 to +85°C
- Packaging: PCB Receptacles — Embossed Tape  
Housing — Bag  
Terminal — Reel

**Series 502380, 502381,  
502382, 502386**



Straight



Right Angle

### Features

- Robust dual positive inner locks (single positive lock below 8 circuits)
- Tuning fork style contact design
- Low insertion force
- Reinforced metal solder tabs
- Flat area for pick-and-place

### Benefits

- Audible "click", low insertion force and secure mating
- Secure contact, and avoids terminal stubbing
- Easy and quick mating for operators
- Housing wall support and secure PCB retention
- No costly capton tape needed

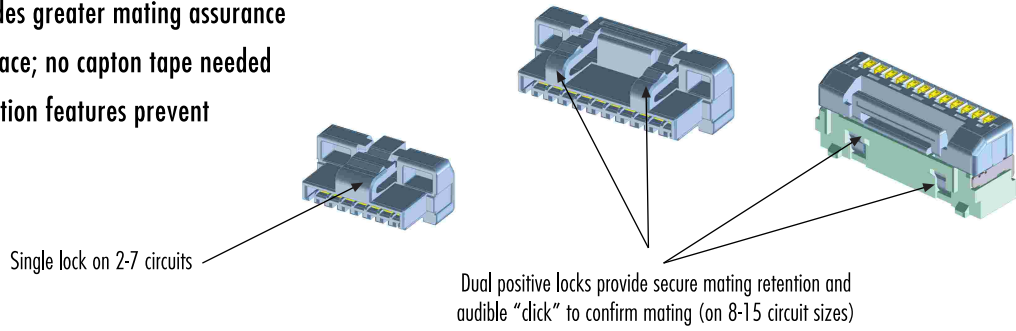
## MARKETS AND APPLICATIONS

- LCD/PDP TVs
- Pachinko/Gaming
- Data Communication equipment
- Any application requiring superior mating assurance



## Key Benefits of CLIK-Mate™

- Robust positive lock provides greater mating assurance
- Direct vacuum pick-and-place; no capton tape needed
- Superior terminal polarization features prevent wrong terminal insertion



## ORDERING INFORMATION

### Crimp Terminal

Order No.	Packaging
502381-0000	Chain

### Crimp Housing

Order No.	Circuit Sizes
502380-XX00	02 to 15

Replace XX with circuit size number

### PCB Receptacles (Vertical)

Order No.	Circuit Sizes
502382-XX70	02 to 15

Replace XX with circuit size number

### PCB Receptacles (Right Angle)

Order No.	Circuit Sizes
502386-XX70	02 to 15

Replace XX with circuit size number

**molex**<sup>®</sup>  
one company > a world of innovation

**Americas Headquarters**  
2222 Wellington Ct,  
Lisle, Illinois 60532 USA  
Tel: 1-800-78MOLEX  
amerinfo@molex.com

**Asia Pacific North Headquarters**  
Yamato, Kanagawa, Japan  
Tel: 81-46-265-2325  
apninfo@molex.com

**Asia Pacific South Headquarters**  
Jurong, Singapore  
Tel: 65-6-268-6868  
apsinfo@molex.com

**European Headquarters**  
Munich, Germany  
Tel: 49-89-413092-0  
euroinfo@molex.com

**Corporate Headquarters**  
2222 Wellington Ct,  
Lisle, Illinois 60532 USA  
Tel: 630-969-4550

Visit our website at [www.molex.com](http://www.molex.com)