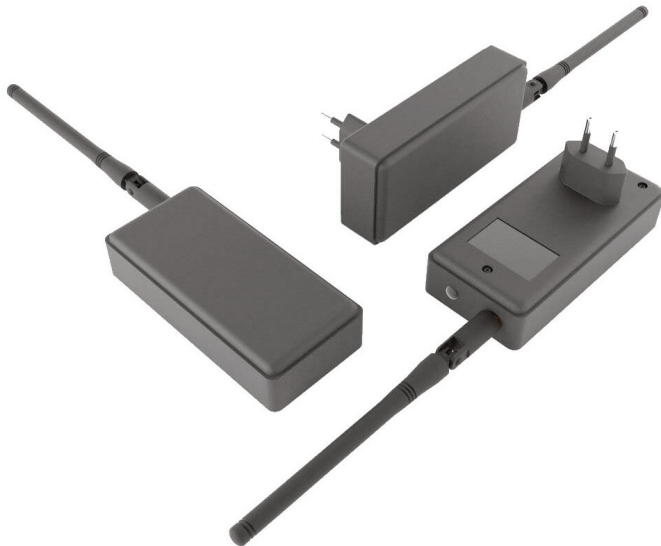


# 163110

## Wireless IoT Power Failure Monitor



The failure monitor is a high-quality and fully autonomous electrical sensor for detecting mains power failures in real time. In addition it also records the duration of a power failure and sends this information to the IoT back-end as soon as power has been recovered. Power consumption of the device is close to zero.

It sends one beacon signal per day during normal operation and in case of a power failure a message will be instantly sent.

The customer has the choice of many different wireless data communication channels like LoRaWAN, Sigfox, wireless MBus, MIOTY etc. The wireless section is battery operated and will last for a minimum of 10 years.

Due to the very long range wireless communication (several kilometers) alarm situations can be forwarded even in case of power failures covering a complete city district.

### Features:

- Mains Power Failure Detection
- Operating Voltage: 230V AC
- Power Consumption: Close to Zero
- Isolation Voltage: > 10kV
- Mains Connector: EUROPLUG
- ON / OFF Switch
- Communication Network: LoRaWAN
- Operating Frequency: 868 MHz
- Transmission Cycle: 1 Beacon / day or more
- Power Failure Duration Log
- Activity LED
- Option: Wireless MBus, Sigfox, MIOTY
- Antenna: external SMA female connector
- Operating Temperature Range: -20°C to +60°C
- Power: internal 1x 3,6V AA/2 Lithium Battery
- Battery life time: min. 10 years
- Dimensions: 120 x 56 x 31 (69) mm

### Applications:

- Mains Power Monitoring
- Damage Prevention e.g. Food Loss
- Office Buildings, Supermarkets
- Refrigeration / Deep-Freeze
- Redundancy for Internet / VoIP / Mobile Com Failure
- Remote Alarm for Critical Infrastructures