

MC0114540

LTE MIMO antenna

698-960/1710-2700/3400-3800 MHz

GSM/ISM/UMTS/WLAN/LTE



Electrical Data

Frequency Range	698-960/1710-2700/3400-3800MHz	
Operational Bands	2G/3G/4G/5G	
Radiation pattern	Directional	
Peak Gain (excl cable loss)	698-960 MHz	6dBi
	1710-2170 MHz	9dBi
	2396-2700 MHz	9dBi
	3400-3800 MHz	9dBi

Mechanical Data

Height	230mm (9")
Width	180mm (7.1")
Depth	94mm (3.7")
Weight	955g
Operating Temperature	-30°C to +80°C
Material	U.V. stable, impact resistant ASA
Colour	Pure white

Mounting Data

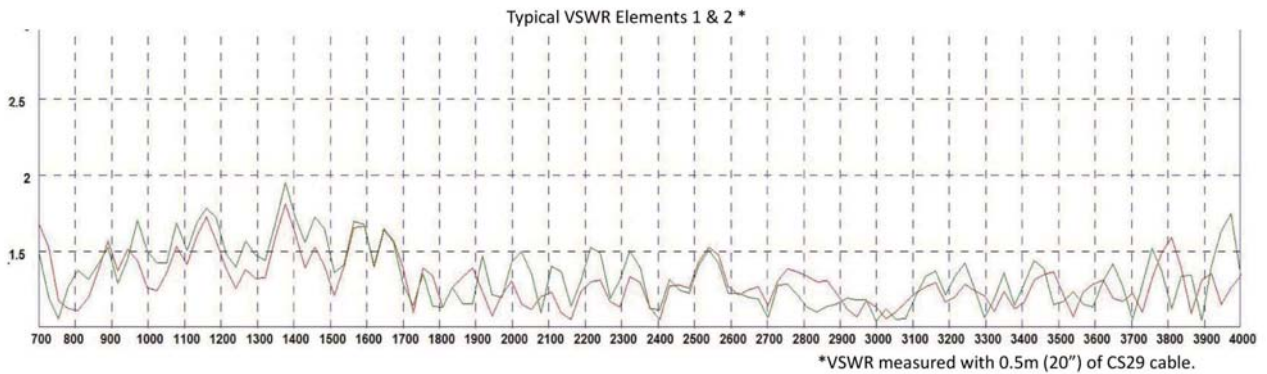
Fixing	Wall mount/ mast mount/ desk mount
Mounting bracket material	Stainless steel / Aluminium

Cable Data

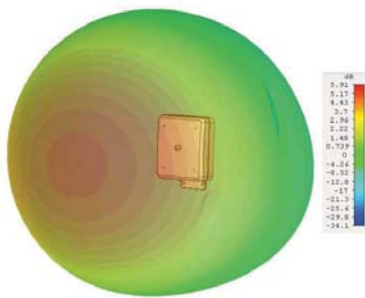
Type	2 x CS29 Coax
Diameter	5mm (0.2")
Length	5m (16")
Termination	2 x SMA (male)



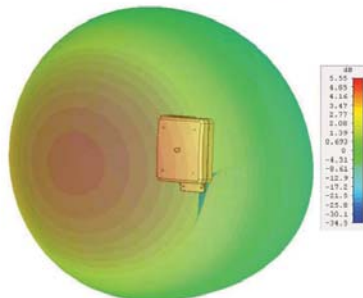
MC0114540 LTE MIMO antenna



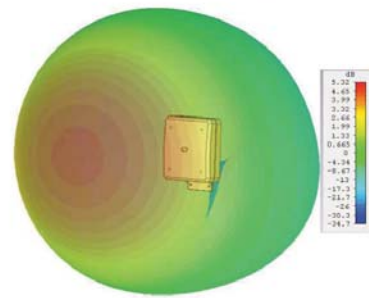
3D Gain Plot (750MHz)



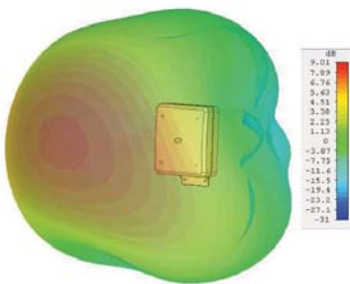
3D Gain Plot (850MHz)



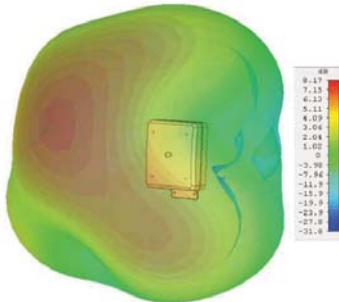
3D Gain Plot (950MHz)



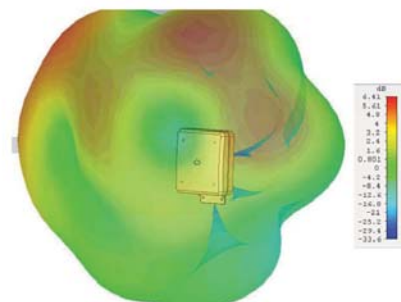
3D Gain Plot (1800MHz)



3D Gain Plot (2000 MHz)



3D Gain Plot (2600 MHz)



3D Gain Plot (3600MHz)

