

MC0114539 WiMAX / LTE antenna

GSM 900/1800/1900/2100/2400/2700 MHz

GSM/ISM/UMTS/WLAN/LTE

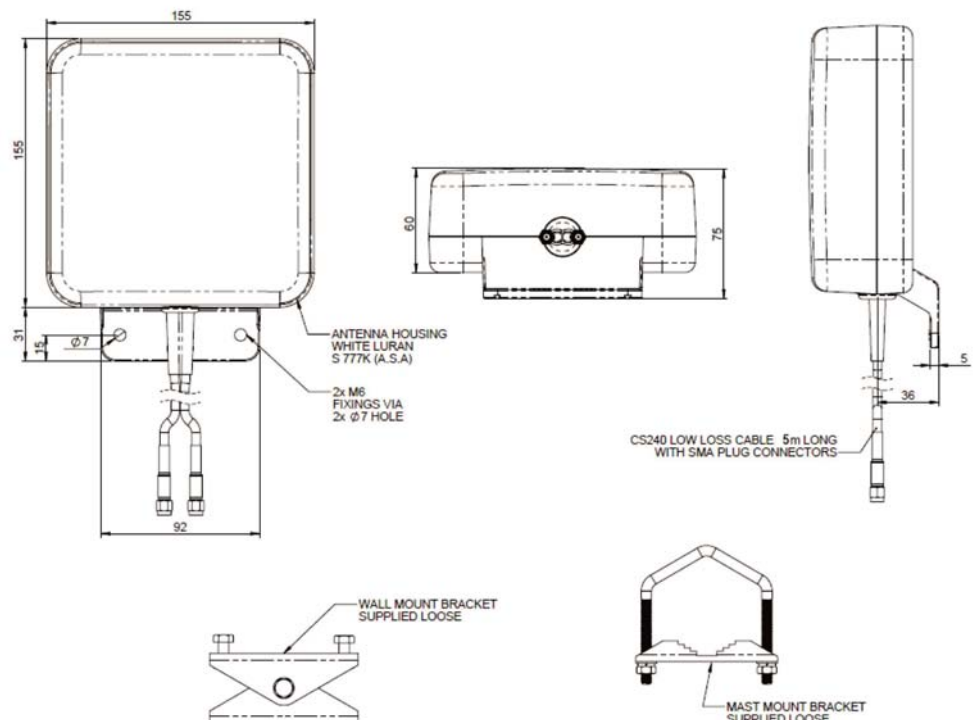


Technical Data:

Frequency range:	800-960 MHz 1710-2700 MHz
VSWR:	≤ 2:1
Operational Bands:	2G / 3G / 4G
Radiation Pattern:	Omni-Directional
Gain:	2 dBi (800-960), 5 dBi (1710-2170), 4 dBi (2400 - 2700)
Impedance:	50 Ω
Max. Input Power:	20W
Dimensions:	186 x 155mm
Operation temperature:	-40°C to +80°C
Fixing:	Pole Mount / Wall Mount / Desk Mount
Cable:	2x 5m CS29 Coax
Connector:	2x SMA (male)

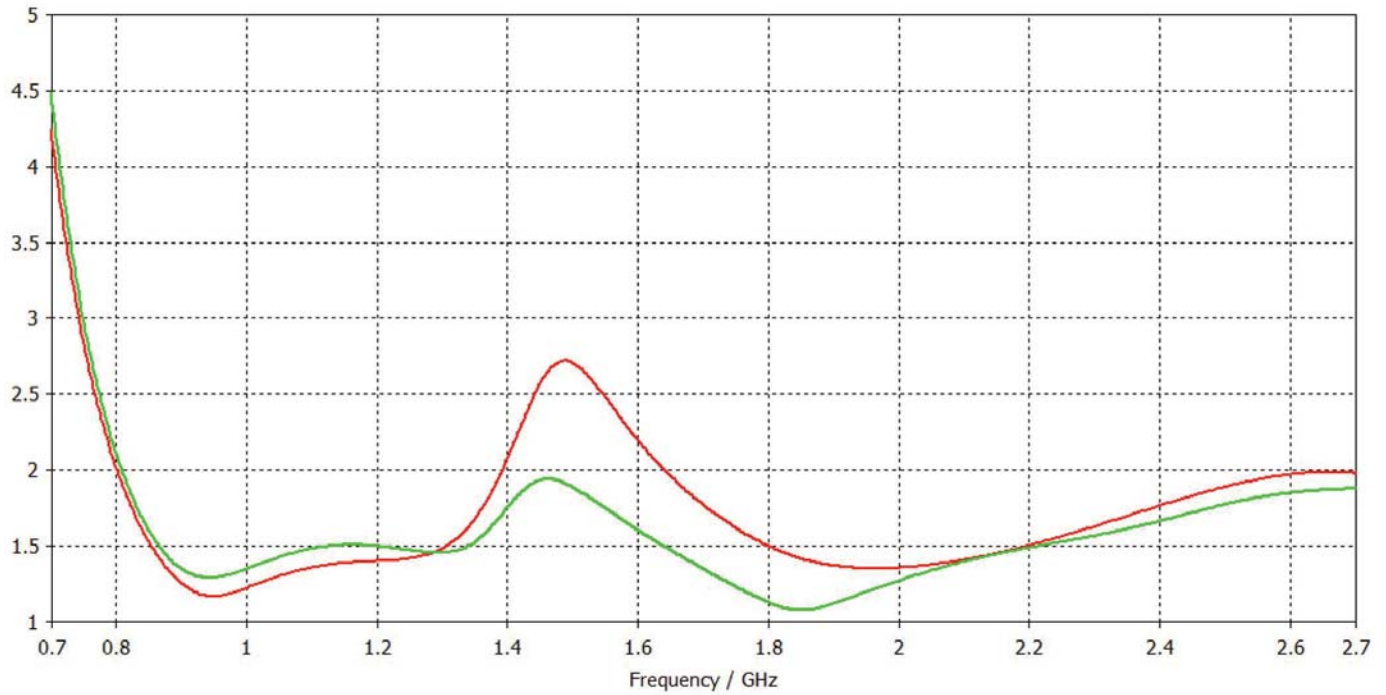


IP65

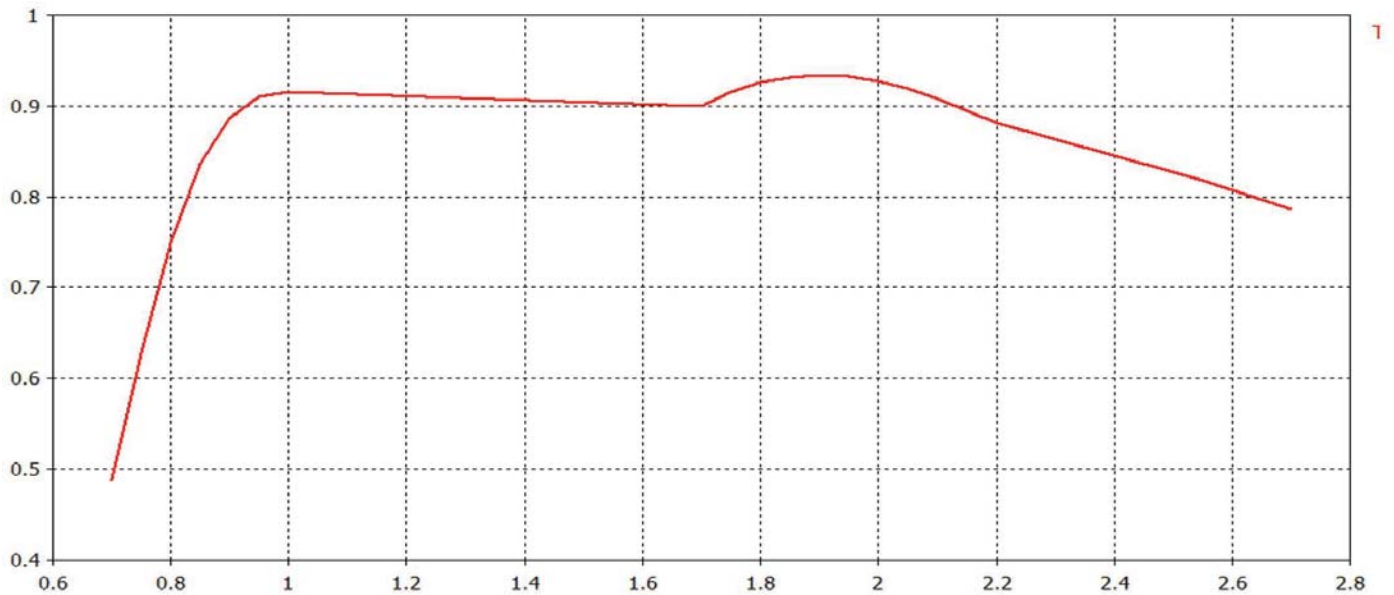


MC0114539 WiMAX / LTE antenna

Typical VSWR Elements 1 & 2



Typical Efficiency



MC0114539 WiMAX / LTE antenna

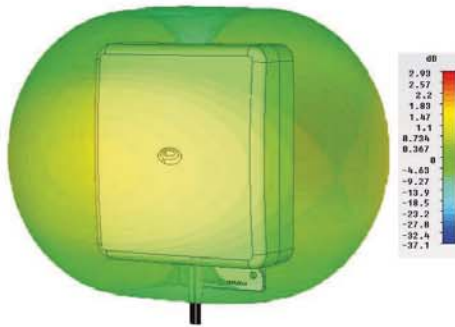
3D Gain Plot (750MHz)



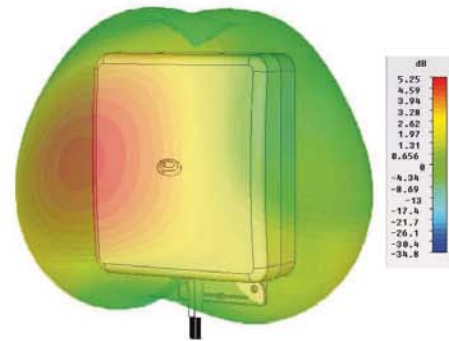
3D Gain Plot (850MHz)



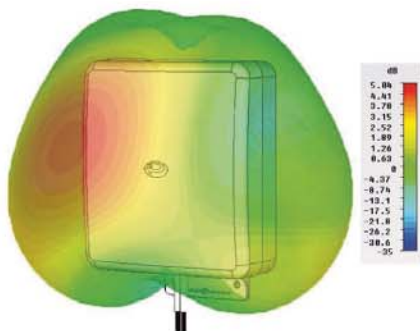
3D Gain Plot (950MHz)



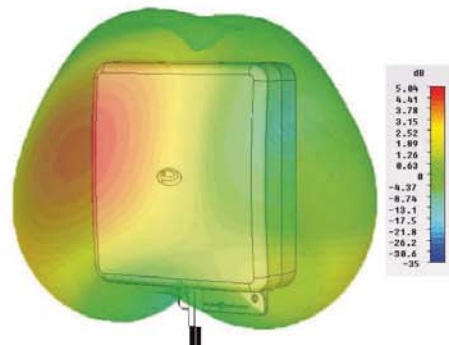
3D Gain Plot (1800MHz)



3D Gain Plot (1900MHz)



3D Gain Plot (2100MHz)



3D Gain Plot (2600MHz)

