

# MC0114526

## LTE multiband antenna

### 2G/3G/4G Bracket Mount Antenna

LTE/GSM/ISM/UMTS/WLAN



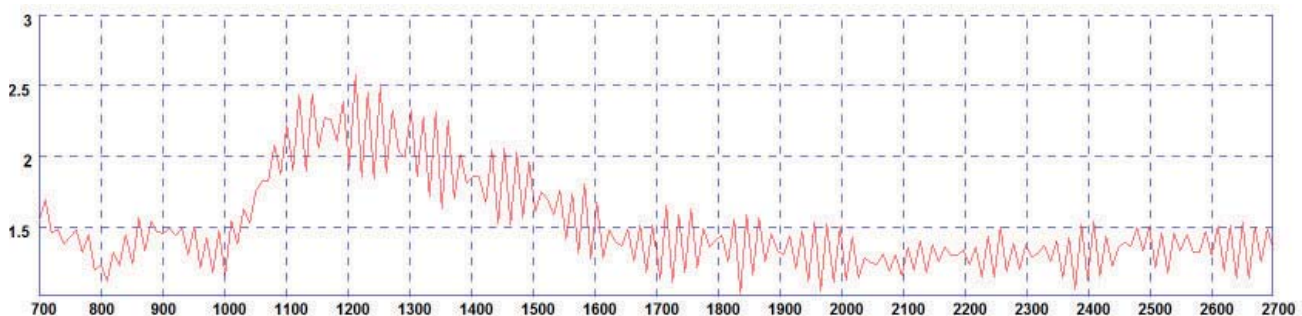
**IP65**



### SPECIFICATIONS

FREQUENCY	698 -960 MHz 1710-2700 MHz
OPERATION BAND	LTE 700, AMPS/GSM850, GSM900, GS1800, PCS1900, 3G UMTS, 2.4 GHz WiFi, 2.6 GHz LTE
VSWR	< 2.5:1
GAIN	2dBi / 4dBi
IMPEDANCE	50 Ohm
POLARISATION	Vertical
PATTERN	Omini-directional
MAX. INPUT POWER	50 Watt
COLOUR	Black & Natural
DIMENSIONS	High 164 mm, Diameter 48mm
MOUNTING	Wall mount or Mast mount
MATERIAL	A.B.S., Aluminium and Galvanized Steel
CABLE/CONNECTOR	5m Low loss / SMA (male)

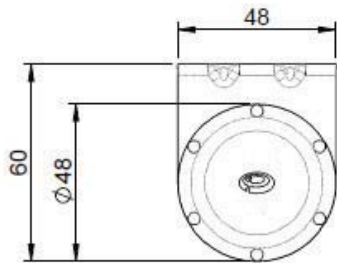
Typical VSWR (B4BE-7-27-5SP)



\*Measured with 5m of CS29 cable

# MC0114526

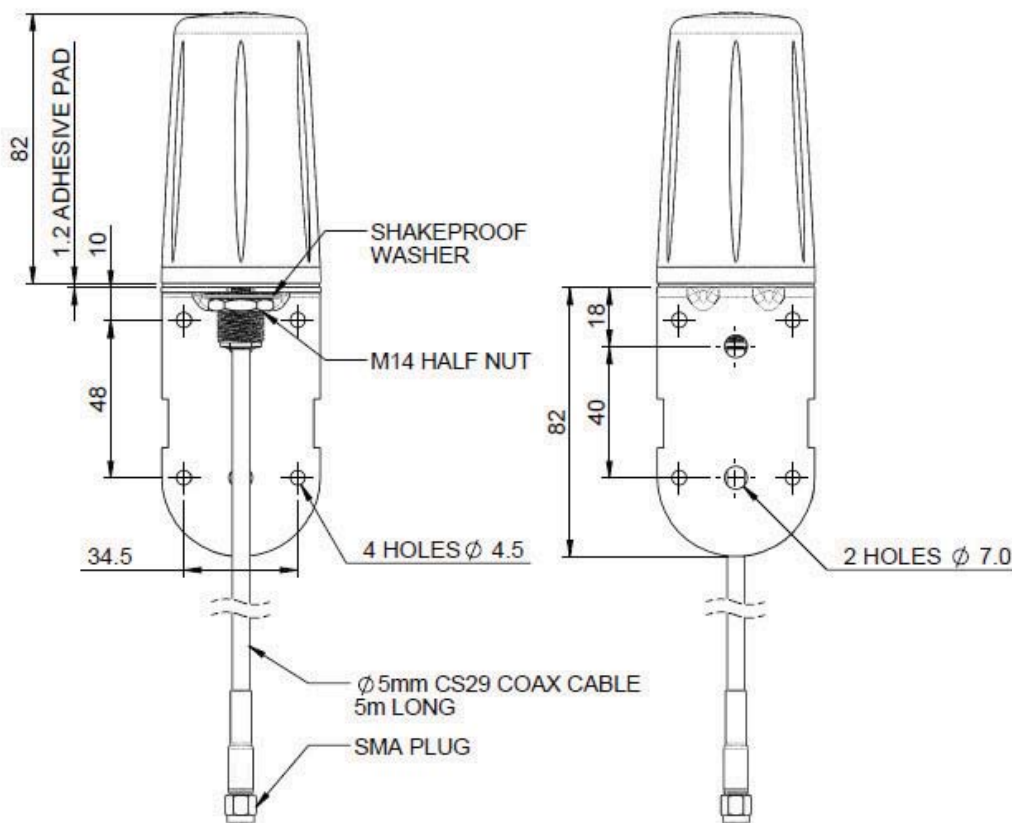
## LTE multiband antenna



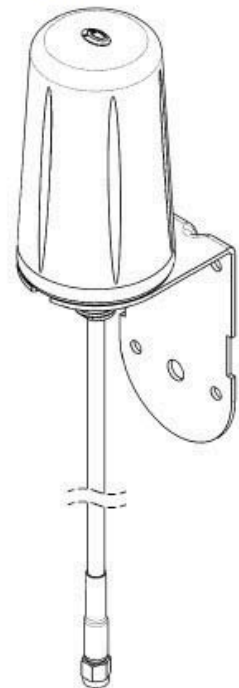
FREQUENCIES.

698 - 960 MHz

1710 - 2700 MHz



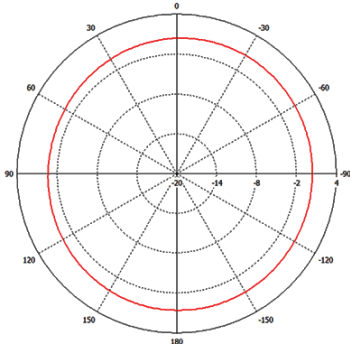
ISO VIEW  
SCALE 1:2



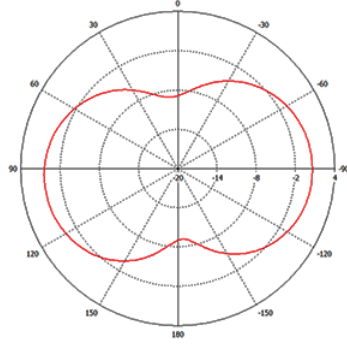
# MC0114526

## LTE multiband antenna

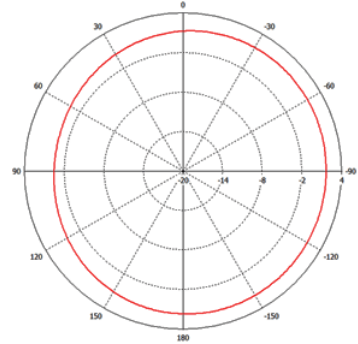
H Plane Plot (700 MHz)



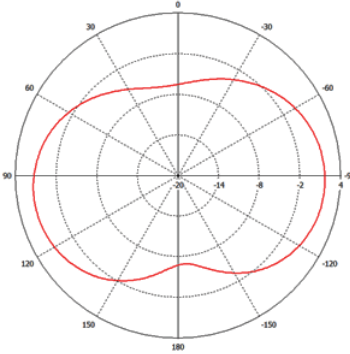
E Plane Plot (700MHz)



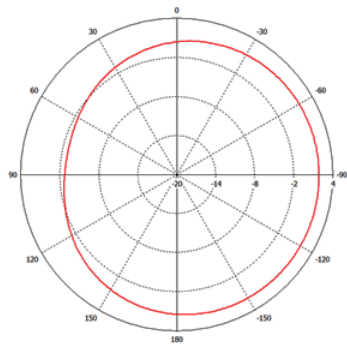
H Plane Plot (800MHz)



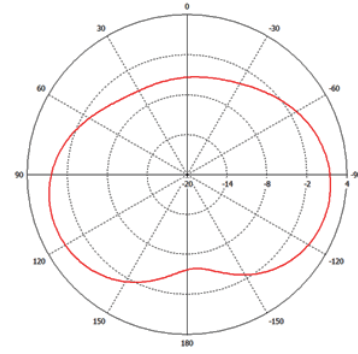
E Plane Plot (800MHz)



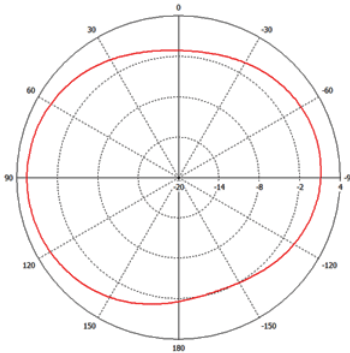
H Plane Plot (900MHz)



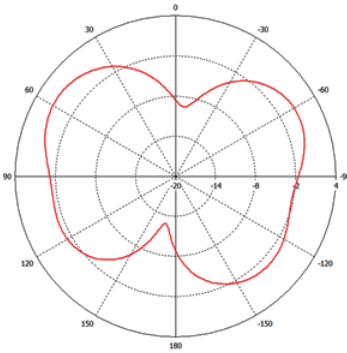
E Plane Plot (900MHz)



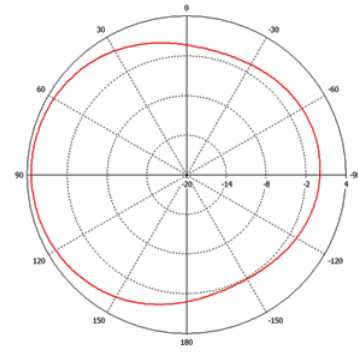
H Plane Plot (1800 MHz)



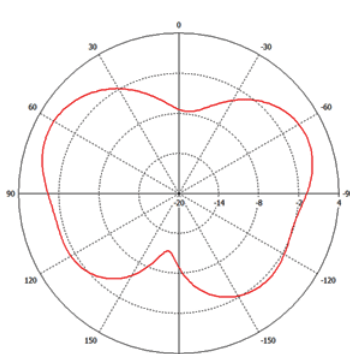
E Plane Plot (1800MHz)



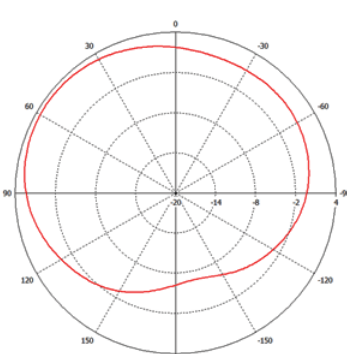
H Plane Plot (2100MHz)



E Plane Plot (2100 MHz)



H Plane Plot (2600MHz)



E Plane Plot (2600MHz)

