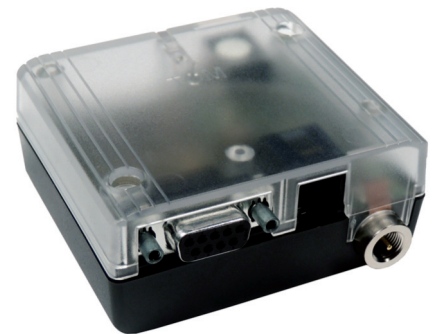


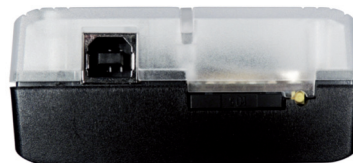
# MC Technologies MC89 HSPA Terminal

## 3G High speed M2M Gateway, powered by Java™



### General features:

- Cinterion® EHS6 embedded
- 3GPP Rel.7 Compliant Protocol Stack
- Five Bands UMTS (WCDMA/FDD)  
Bands: 800, 850, 900, 1900 and 2100 MHz
- Quadband GSM850/900/1800/1900 MHz
- SIM Application Toolkit, letter class "b", "c", "e"
- Control via standardized and extended AT commands (Hayes, TS 27.007 + 27.005)
- TCP/IP stack access via AT command and transparent TCP services
- Secure Connection for client IP services
- Internet Services TCP/UDP server/client, DNS, Ping, FTP client, HTTP client
- Supply voltage range: 8 - 30V
- Operational temperature range: -30 °C to +75 °C
- Dimensions: 65x74x33mm
- Weight: approx. 110g
- DIN rail mounting
- Screw fixing



### Special features:

- USB interface supports multiple composite modes and a Linux-/Mac- compliant mode
- Firmware update via USB and serial interface
- Real time clock with alarm functionality
- Multiplexer according 3GPP TS 27.010
- RLS Monitoring (Jamming detection)
- Informal Network Scan
- Hardware watchdog
- Integrated FOTA, configurable and royalty free

### Interfaces:

- Power connector 6-pole Western jack
- Mini SIM card reader, 1,8V and 3,0V
- Antenna connector FME (male)
- 2 operating status LED's
- 6 programmable LED's
- USB 2.0 HS interface up to 480 Mbps
- V.24/ V.28 RS-232 interface (D-sub 9-pole female socket) 920kbps, auto bauding

### optional:

- **Wireless M-Bus**
- **Digital GPIOs**
- **Any customer specific interface possible**

### Java™ Open Platform features:

- Java™ ME 3.2
- Secure data transmission with HTTPS/SSL
- Multi-threading programming and Multi-Application execution
- 10 MB RAM and 10 MB Flash File System

### Approvals:

- CE, RED
- WEEE, EuP, RoHS and REACH compliant

### Specification for data:

- HSDPA Cat.8 / HSUPA Cat.6 data rates  
DL: max. 7.2 Mbps, UL: max. 5.76 Mbps
- EDGE Class 12 data rates  
DL: max. 237 kbps, UL: max. 237 kbps
- GPRS Class 12 data rates  
DL: max. 85.6 kbps, UL: max. 85.6 kbps, Mobile Station Class B
- CSD data transmission up to 9.6 kbps, V.110, non-transparent
- SMS text and PDU mode support

### Driver:

- USB, MUX driver for Microsoft® Windows XP™, Vista™ and 7™
- RIL, USB driver for Microsoft® Windows Embedded Handheld™ >= 6.x
- MUX driver for Microsoft® Windows XP™, Vista™ and 7™

## MC Technologies MC89 HSPA Terminal und Zubehör

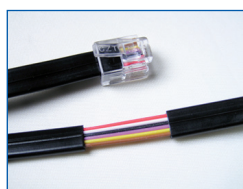
Artikelbezeichnung	Artikel-Nr.
MC89 HSPA Terminal - Made by MC Technologies -	MC1213889-HSPA-TERM
Netzteil incl. Anschlußleitung / EU-Stecker - auch mit UK- oder US-Stecker lieferbar	MC1213114-45-EU-N
Stromkabel / offenes Ende, 6-adrig, ca. 1,5m	MC1213115
12-24V KFZ-Adapter, 1,5m Kabel	MC1213116
Datenkabel 1,8m, 9pol. Stecker - 9pol. Buchse	MC1213226
USB-Standardkabel A/B, 1m	MC1213229-1
USB-Standardkabel A/B, 2m	MC1213229-2
12V Akkupack	MC1213152
Hutschienen-Halterung inkl. 2 Befestigungsschrauben	Mounting Kit TC/MC



Netzteil



KFZ-Adapter



Stromkabel



USB-Standardkabel



Datenkabel