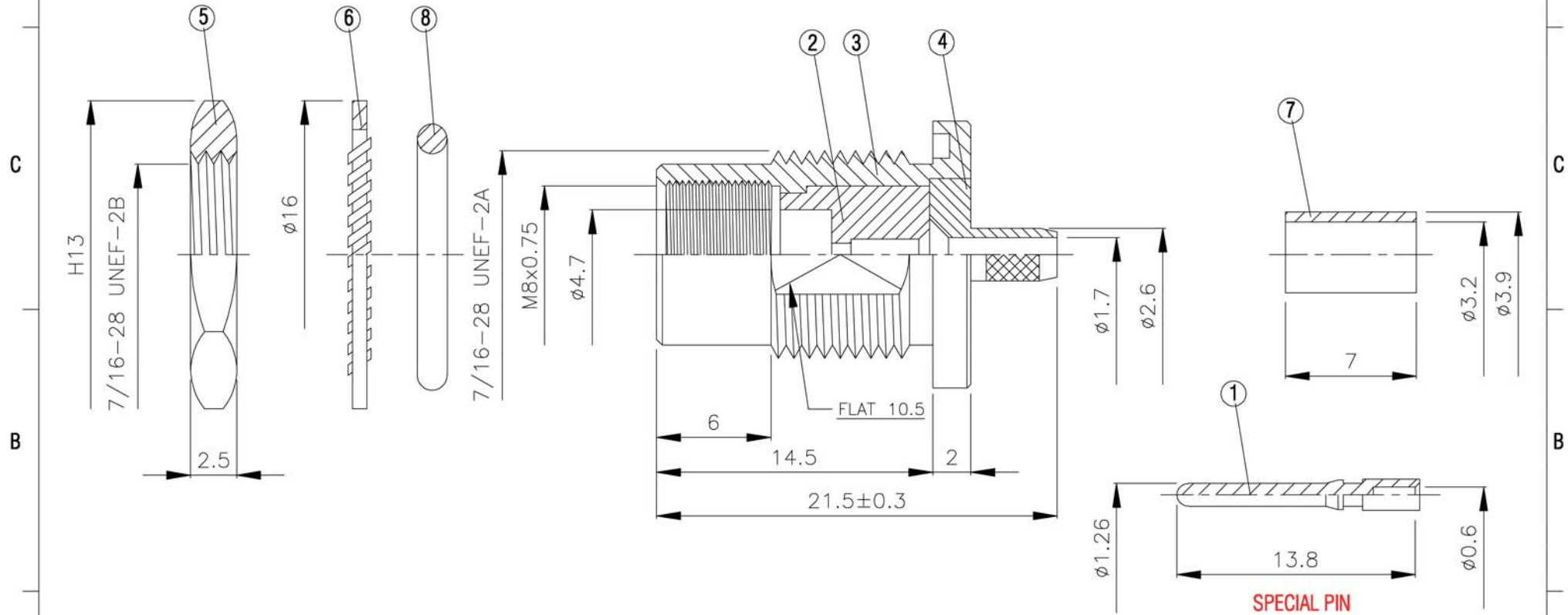
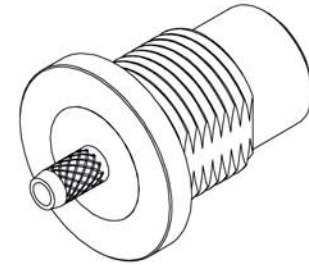
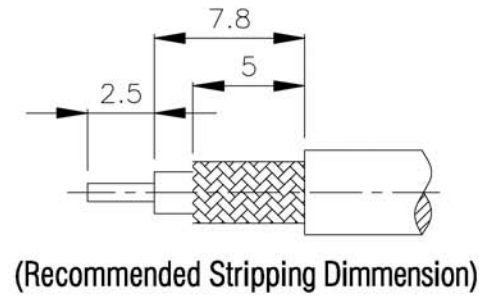


NO	DESCRIPTION	MATERIAL	Q'TY	FINISH	REMARK
1	PIN	BRASS	1	GOLD	P-FME0849-G
2	INSULATION	TEFLON	1	TEFLON	I-0500T
3	BODY 1	BRASS	1	NICKEL	B-FME0186-N
4	BODY 2	BRASS	1	NICKEL	B-FME0417-N
5	NUT	BRASS	1	NICKEL	N-0043-N
6	WASHER	BRASS	1	NICKEL	W-0028-N
7	RING	BRASS	1	NICKEL	R-0001-N
8	GASKET	SI RUBBER	1	RUBBER	RU-0016



A	MCT	DRAWN	DATE	DIMENSIONS ARE IN MILLIMETERS		REVISION	
	TITLE FME MALE CRIMP FOR EC-64 RG 316/U(EC-64)	CHECKED	DATE	UNLESS OTHERWISE SPECIFIED TOLERANCE		DESCRIPTION	ENGINEER
		Q.A.	DATE	0.5-5=±0.2	120-315=±1		
		APPROVAL	DATE	5-30=±0.4	315-1000=±1.6		
		REVISION	DATE	30-120±0.6	1000-2000=±2.4		
PART NO. NI-123			SCALE	4:1	SIZE	A	
DRAWING NO.							