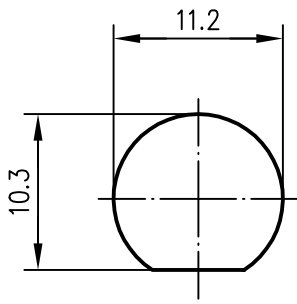

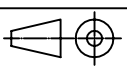


Montagebohrung/ Panel pircing



Außenleiter / outer conductor	CuZn39Pb3	Cu2Ni5
Innenleiter / inner conductor	CuZn38Pb1.5	Cu2Ag5
Isolierung / insulator	PP	
Crimprohr / crimp ferrule	SF Cu w	Ni5
 Kabel / cable	G 7 : KX 22, KX 3B, RG-174/U, RG-188A/U, RG-316/U	
 Montage / assembly	B2725 (b)	

d	15233	12.02.04	KL	97	Datum/date	Name/name	Werkstoff/ material
				gez./drawn	12.11.	BI	
c	10575	06.07.99	BJ	gepr./appr.	17.11.97	BJ	Oberfläche/ finish
b	9481	26.08.98	BJ	Norm./stand.			
a	8767	04.02.98	BI	Maßstab/scale	Benennung/title		
				2:1	FME-Kabeleinbaustecker FME-Bulkhed plug (a)		
				untol. Maße/ dim. without tolerances according to	Untert./doc.type	Zeichnungsnr./drawing no.	 Maße/dimensions: mm Original: DIN A4
Änd./rev. Index	Änderungsmittellung/ revision code	Datum/ date	Name/ name	Ersatz für/ replaces	K J01700A0013 EW970178-00		