

Variable X, Y and Z have to be stated within the drawing number when an order is placed.

### Variable X= Coding

coding X=	A	B	C	D	E	F	G	H	I	J	K	L	M	N
front view														
colour	deep black	cream white	signal blue	bordeaux violet	leaf green	nut brown	blue grey	heather violet	beige	curry yellow	carmine red	pastel green	pastel orange	pastel green
coding X=														
front view														
colour														

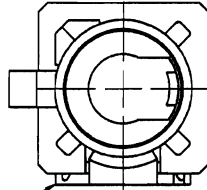
### Variable Z= Plating

Part	Material	Variable Z =
Plastic Housing	PA 6.6	1 5 9
Centre Contact	Brass	Au
Outer Contact	Brass	White bronze
Insulator	PE/PIFE	
Rest	Brass/cooper	Ni

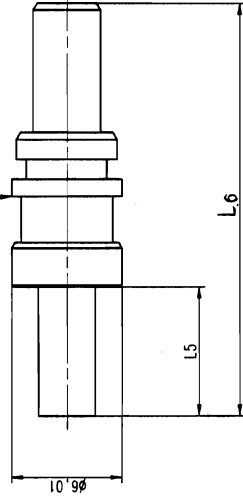
### Variable Y=Cable type

Y-Variable	Cable type	Outer contact Crimp		Inner contact Crimp		total length	length crimp ferrule	Assembly instruction M-XXX	Crimp die IMS-number
		size	length	size	length				
1	ET 124.899	2,67	4,0	1,23	1,5	22,5	7,0	M-156	AGK-3573-10
2	RG 174; RG 316	3,30	6,0	0,73	1,5	23,6	9,0	M-157	AGK-3573-11
3	RTK 031	4,30	6,0	1,15	1,5	23,6	9,0	M 157	AGK-3573-13
4	Hrose UFL-LP-066 A1280733-01	2,67	4,0	1,23	1,5	22,5	7,0	M 156	AGK-3537-10
8	RG 58	5,35	6,0	1,15	1,5	23,6	9,0	M 157	AGK-3537-14

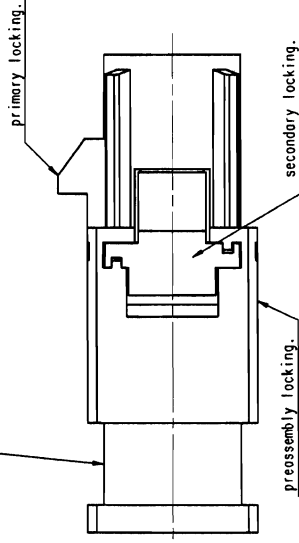
View with preassembled secondary locking see without inserted SMA connector.



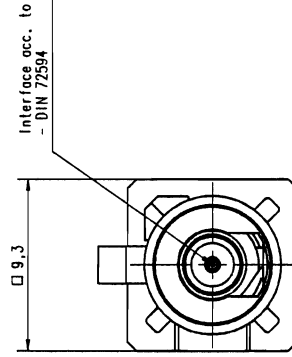
Ordering no.: 3401.SMA.1010.0YZ.99



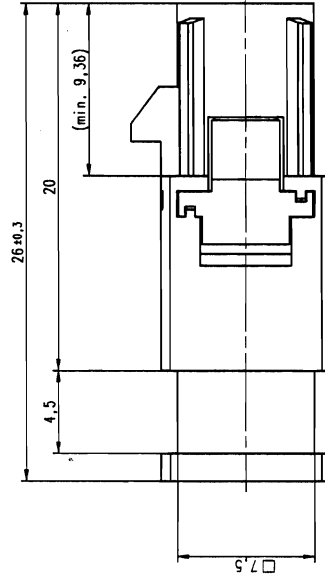
Ordering no.: 3401.SMA.1X10.0YZ.98



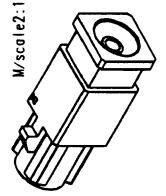
View with preassembled secondary locking and without inserted SMA connector.



View with inserted SMA connector.



Ordering no.: 3401.SMA.1X10.0YZ



ISO 7188		scale	5:1 (2:1)
general tolerance		Assembly instruction	
ISO 7188		Stripping dimension	
M 156		M-XXX	
M 157		Kabelstecker	
M 157		Cable plug	
M 156		3401.SMA.1X10.0YZ	
M 157		Rev 1	