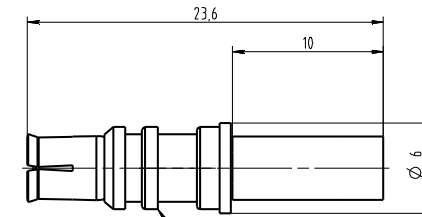
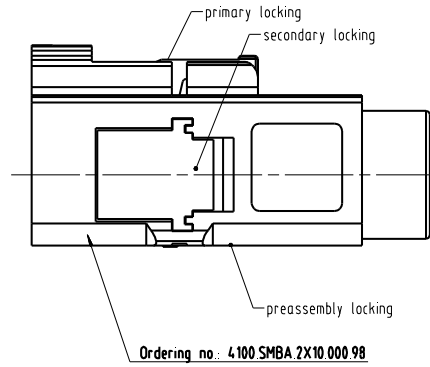
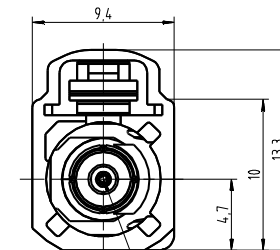


View with preassembled secondary locking
and without inserted SMBA connector



Ordering no.: 4100 SMBA.2010.0YZ.99

View with inserted SMBA connector



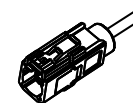
Interface acc.
to DIN 72594

Ordering no.: 4100 SMBA.2X10.0YZ

Assembly Instruction:
Stripping dimensions: see table

Variable X and Y have to be stated
within the drawing number when a order is placed.

		general tolerance	ISO 2768	scale: 4:1			
		mH	mH	Assembly Instruction: Stripping dimensions: see table			
		date	name	Kabelkuppler Cable jack			
		checked	RenZ				
		Norm		4100 SMBA.2X10.0Y9			
EC-163.15	d	Revised	11.11.15	Ifa		4100 SMBA.2X10.0Y9	Rev. d
EC-122.11	c	PBT was PA	16.10.11	ehl			
design	b	coding Z add.	07.09.10	ehl			
design	a	Überarbeitung	14.09.07	RenZ			
nr.	rev.	alteration	date	name			



Variable X = Coding

coding X=	A	B	C	D
front view				
colour	deep black	cream white	signal blue	bordeaux violett
coding X=	E	F	G	H
front view				
colour	leaf green	nut brown	blue grey	heather violet
coding X=	I	K	L	M
front view				
colour	beige	curry yellow	carmine red	pastel orange
coding X=	N			Z
front view				
colour	pastel green			water blue

Variable Z = Plating

Part	Material	Variable Z =		
		1	5	9
Plastic Housing	PBT			
Centre Socket	bronze			Au
Outer Contact	brass			Ni
Insulator	PE			
Crimp ferrule	brass copper			Ni

Y Variable	Cable type	Assembly Instruction
2	RG-174	M-191
3	LL3.2	M-192