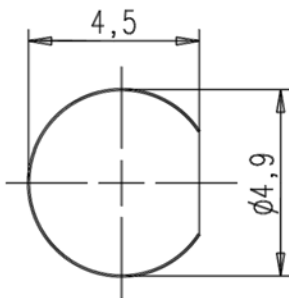
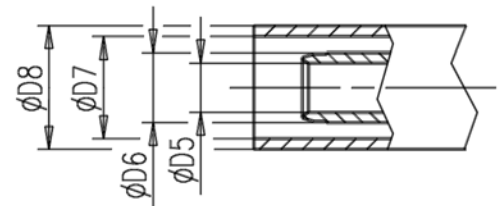
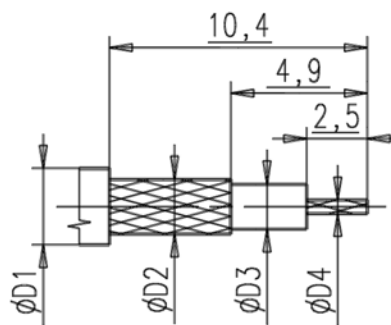


1:1

Montagedurchbruch  
Panel cut-out



Kabelzuschnitt  
Stripping dimension



Fuer Kabel /  
For cable

Gr.	Type Typ	phi D1 max.	phi D2 max.	phi D3 max.	phi D4 max.	phi D5	phi D6	phi D7	phi D8	Crimp Aussen/out	Crimp Innen/in	Crimp tool
1	RG 178 BU;RG 196 AU;	2,10	1,30	0,90	0,30	1,15	1,70	2,25	3,10	2,67	0,70	AGK-2409
2	RG 174 BU;RG 316 U;	2,80	2,20	1,58	0,54	1,70	2,30	3,00	4,00	3,25	0,84	AGK-3436
3												
4												
5	RG 316 U-d;	3,10	2,50	1,55	0,54	1,70	2,30	3,30	4,00	3,25	0,84	AGK-3436

**IMS** CONNECTOR  
SYSTEMS

general tolerance  
ISO 2768  
mH

scale: 5:1

Assembly instruction: M43  
Stripping dimension:

date name  
generate 03.11.87 Baermann  
checked

Einbaustecker

353/03	e	Crimptool def.	27.08.03	Mayer	Norm
105/03	d	phi 1,67 --> phi 1,58	14.03.03	Mayer	31096
658/01	c	KG1 Crimpung 2,67	13.11.01	Mayer	
	b	Kabelzuschnitt	07.10.93	I.S.	
	a	L=18,7-->20,0	23.09.88	Grode	
nr.	rev.	alteration	date	name	



1071577

Rev.  
e